

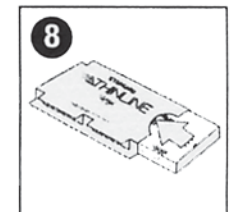
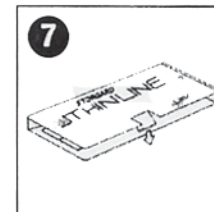
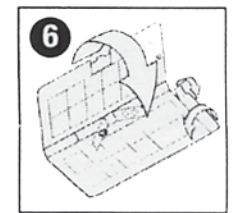
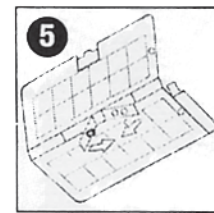
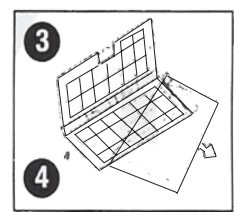
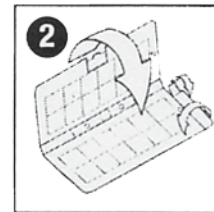
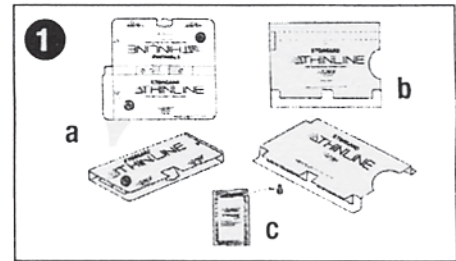
# STORGARD<sup>®</sup> THINLINE<sup>™</sup> Insect Monitoring Kit Assembly Instructions



FOR IMM+4, CB AND COMBI

## TRAP ASSEMBLY INSTRUCTIONS

- Remove contents from carton. Each carton includes:
  - traps (10)
  - wall mounts (5)
  - pheromone lures (5)
- Fold trap at indicated score lines to establish right angles, 90°. This will result in the trap appearing bookshaped.
- Remove release paper (adhesive covering) to expose both adhesive surfaces of the trap.
- Place pheromone lure in hole in the back of the trap (described as "Insert Lure") by inserting the small end of the lure(s).
- Fold tabs with lure inserted into the trap until they come in contact with adhesive surface.
- Fold at 90° and tuck "dust cover" toward adhesive.
- Fold trap cover to a closed position and bend center tab at score line to a 45° angle; then insert the tab into the slot on bottom of the trap.
- Slide assembled trap into shelf mount or wall mount. Or, you may choose to use this trap on any flat surface.

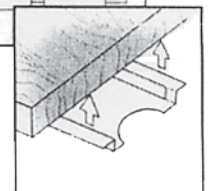
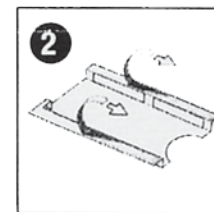
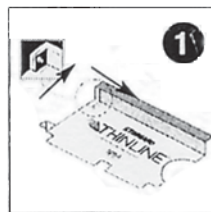


## WALL MOUNT ASSEMBLY

- Fold wall mount as indicated along score lines. Be careful to establish right angles, 90°. Depress the small trap stop-tab labeled "Press after mounting".
- Remove release paper (adhesive covering) from each side of wall/shelf mount.
- Attach mount to a clean surface of wall or under shelf as shown.

**Please note:** Use soap and water or organic solvent to remove all oil and debris from surface before mounting.

**Warning:** When using as a wall mount, be sure to place the correct side up. Note directions on wall/shelf mount labeled "THIS SIDE UP FOR WALL MOUNT". When using as a shelf mount, turn mount with adhesive sides facing up and orient access slot (half moon) toward outside of shelf.



Distributed by:  
Great Lakes IPM, Inc.  
10220 Church Rd NE  
Vestaburg MI 48891

989-268-5693  
800-235-0285  
FAX: 989-268-5311

www.greatlakesipm.com  
E-mail: glipm@greatlakesipm.com

