

# Pherocon<sup>®</sup> Olive Fruit Fly Insect Monitoring Kit Assembly Instructions



## TRAP ASSEMBLY INSTRUCTIONS

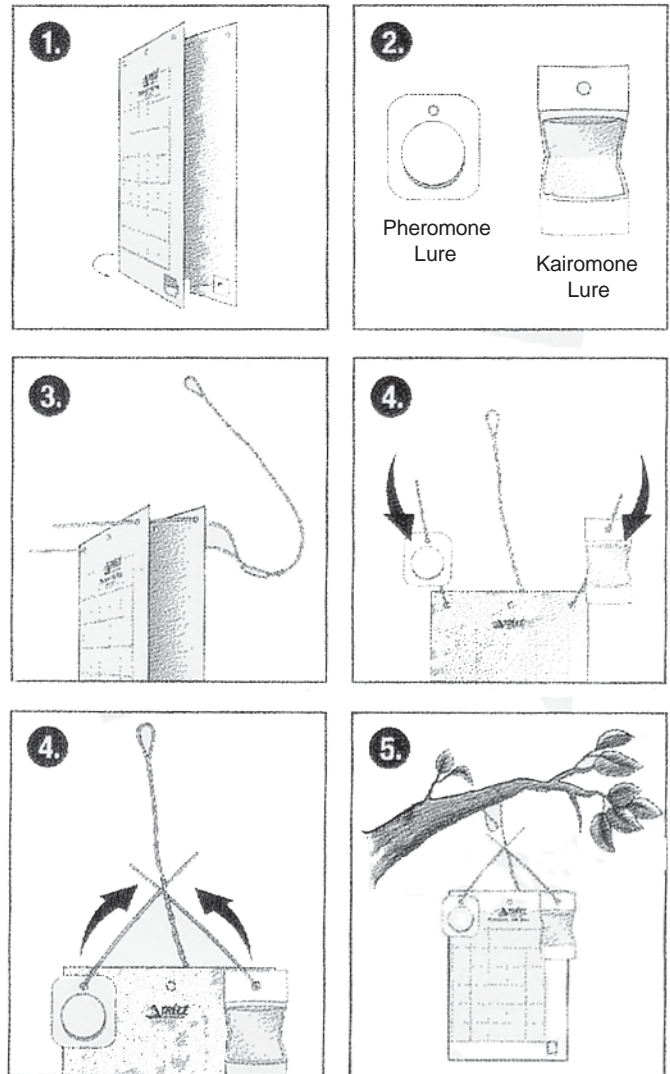
1. Fold PHEROCON AM Trap inside out to expose yellow surface with glue. Lock the trap in this position with the locking tab at the bottom.
2. Remove one pheromone sex lure from each foil pouch and one kairomone lure from its foil pouch.
3. Push out the circular die-cut perforations at the top of the trap. Insert the ends of the wire into the holes on the outer edge of the trap and pull through.
4. Attach one lure to each end of the wire and secure at top of trap. Bend both ends of wire towards each other so that the wire ends lay flat against the trap.

**NOTE:** The attractants will release through the packaging. The lures do not need to be pierced to activate.

5. Attach free end of wire to a tree branch as shown in figure 5.

## GUIDELINES FOR USE

1. For monitoring purposes use 1 trap per 10 acres or at least 2 traps minimum per orchard.
2. Place trap with lures in trees with a lot of fruit versus trees with little or no fruit.
3. Change trap and both lures every 4 weeks.



Distributed by:  
Great Lakes IPM, Inc.  
10220 Church Rd NE  
Vestaburg MI 48891

989-268-5693  
800-235-0285  
FAX: 989-268-5311

www.greatlakesipm.com  
E-mail: [glipm@greatlakesipm.com](mailto:glipm@greatlakesipm.com)

