

BEE-SCENT™

ATTRACTS AND STIMULATES BEE ACTIVITY
IN ORCHARDS AND FIELD CROPS.

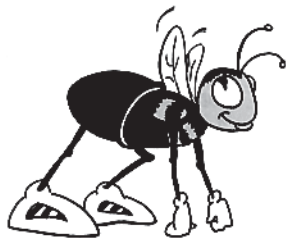


CONTENTS
2½
GALLONS



PRINCIPAL FUNCTIONING AGENTS:

PHEROMONES.....	9.5%
OTHER NATURAL ATTRACTANTS.....	42.5%
CONSTITUENTS INEAFFECTIVE AS ATTRACTANTS.....	48.0%
TOTAL	100.0%



GENERAL INFORMATION:

BEE-SCENT™ is a liquid formulation of natural essential attractants that lures and holds honey bees to blooming crops. Bee-Scent™ chemistry includes pheromones that attract and stimulate honey bee activity. Pheromones are natural occurring biological scents that affect

and modify insect behavior. Bee-Scent™ should be used on crops in which pollination is reliant or enhanced by honey bee activity.

INSTRUCTIONS FOR USE:

Bee-Scent™ should be used at a rate of 2.0 quarts per acre. Bee-Scent™, applied through aerial or ground equipment, should be mixed with enough water to provide uniform coverage of the sprayed crop. Apply Bee-Scent™ at early bloom and at 6-10 day intervals throughout the flowering season. Multiple applications are required on long-blooming crops. Adverse weather conditions may shorten duration of product effectiveness and additional applications will be necessary.

CAUTION

DO NOT APPLY WITH PESTICIDES THAT ARE TOXIC TO BEES

LIMITED WARRANTY

Scentry warrants that this product, as of the time of its sale by Scentry, conforms to the statements on the label. Except as so warranted the product is sold AS IS. SCENTRY MAKES NO OTHER WARRANTY EXPRESS OR IMPLIED OF FITNESS OR MERCHANTABILITY. In no case shall Scentry be liable for CONSEQUENTIAL or SPECIAL or INDIRECT DAMAGES resulting from the use or handling of this product. The warranty may be varied only by agreement in writing signed by a duly authorized representative of Scentry.

CAUTION: Keep Out of Reach of Children

STATEMENT OF PRACTICAL TREATMENT

If in Eyes: Immediately flush eyes with plenty of water for at least 15 minutes. Promptly call a physician. **If on Skin:** Wash with plenty of soap and water. Get medical attention if irritation persists. **If Swallowed:** Call a physician or Poison Control Center. Induce vomiting by giving two glasses of water and sticking finger down throat. Do not induce vomiting or give anything by mouth to an unconscious person.

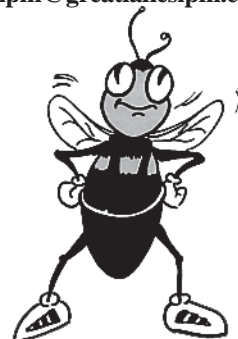
Manufactured by:

SCENTRY™ INC.

A United Agri Products Company

Distributed by:

Great Lakes IPM, Inc.
10220 Church Rd NE
Vestaburg MI 48891
989-268-5693
FAX: 989-268-5311
www.greatlakesipm.com
E-mail:
glimp@greatlakesipm.com



CROPS GROWN IN NORTH AMERICA THAT ARE DEPENDENT UPON OR BENEFITTED BY INSECT POLLINATION.

Alfalfa	Cotton	Mandarins	Parsley
Almonds	Crabapple	Mango	Parsnips
Anise	Cranberries	Buckwheat	Passion fruit
Apples	Crownvetch	Cabbage	Peaches
Asparagus	Cucumbers	Caraway	Pears
Avocado	Currants	Carrots	Peppers
Blackberries	Dill	Cauliflower	Persimmon (native)
Blueberries	Drug plants	Celery	Plums and Prunes
Broad beans	Eggplant	Cherries	Pumpkin
Broccoli	Endive	Chervil	Radish
Brussels sprouts	Feijoa	Chestnut	Rape
Clovers	Fennel	Chicory	Raspberries
Alsike	Figs	Cicer milkvetch	Rutabaga
Arrowleaf	Gooseberries	Muskmelons	Safflower
Ball	Grapes (muscadine)	Casaba	Sainfoin
Berseem	Guava	Cantaloup	Squash
Crimson	JuJube	Crenshaw	Stawberries
Persian	Kale	Honeyball	Sunflower
Red	Kidneyvetch	Honeydew	Sweetclovers
Rose	Kiwi, or Chinese gooseberry	Honeyrock	Tangelo
Strawberry	Kohlrabi	Pershaw	Tangerines
White	Kudzu	Persian	Tendergreens
White Landino	Lespedeza	Santa Claus	Trefoil
Coconut	Lima beans	Mustard	Tung
Coffee	Litchi or Lychee	Nectarines	Turnips
Collards	Loquats	Onions	Vetch
Coriander	Macadamia	Papaya	Watermelons
			White spatoe

Depend on **BEE-SCENT**™

Manufactured by

SCENTRY™ INC.

A United Agri Products Company